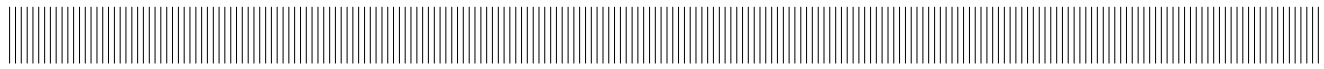


	EQUIPAGGIAMENTI TECNICI LAVAGGIO	29.0600.00 LP1 LAVAPAVIMENTI INOX STAINLESS STEEL FLOOR CLEANER	① GB	4
				29/09/05

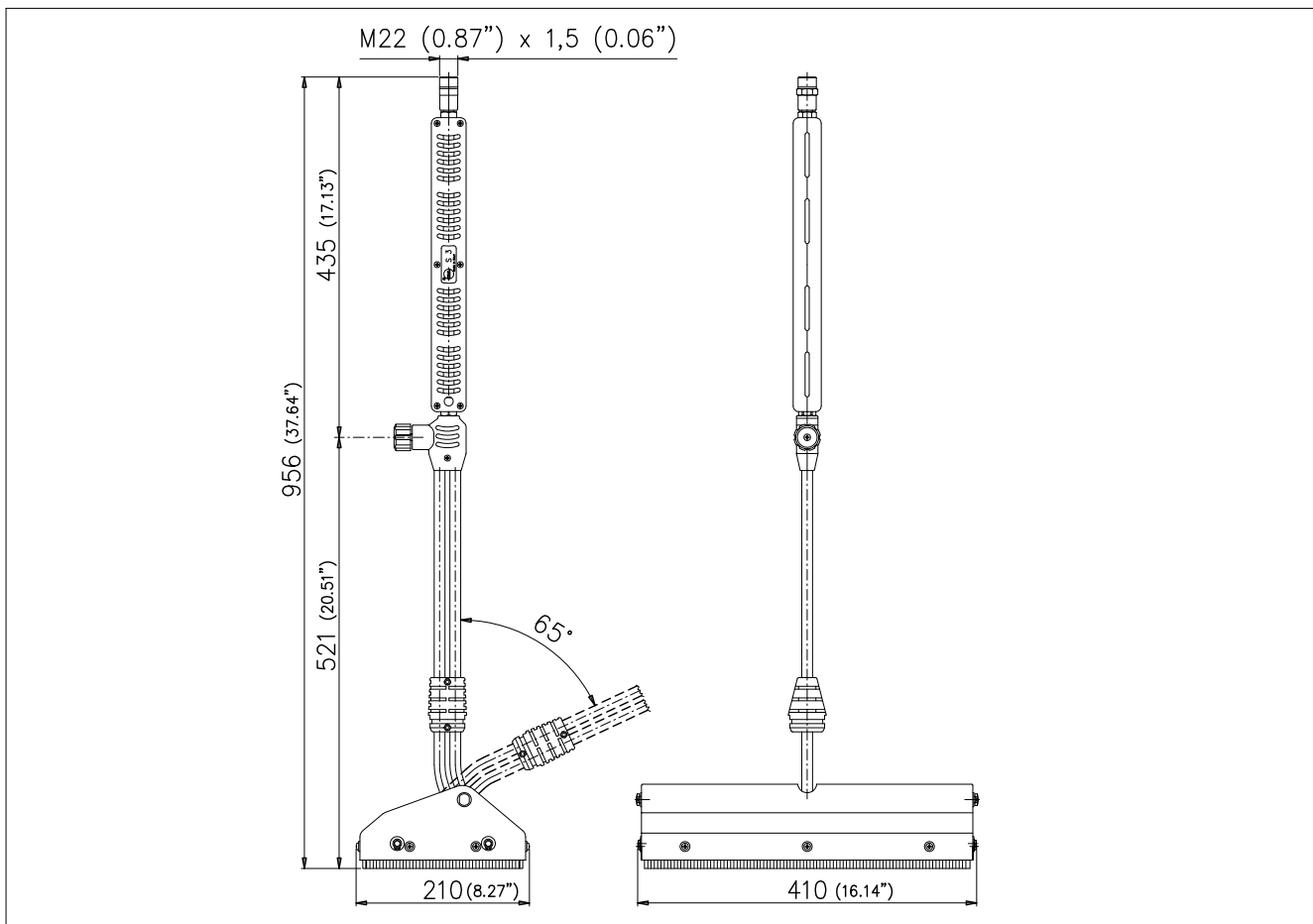
LP1



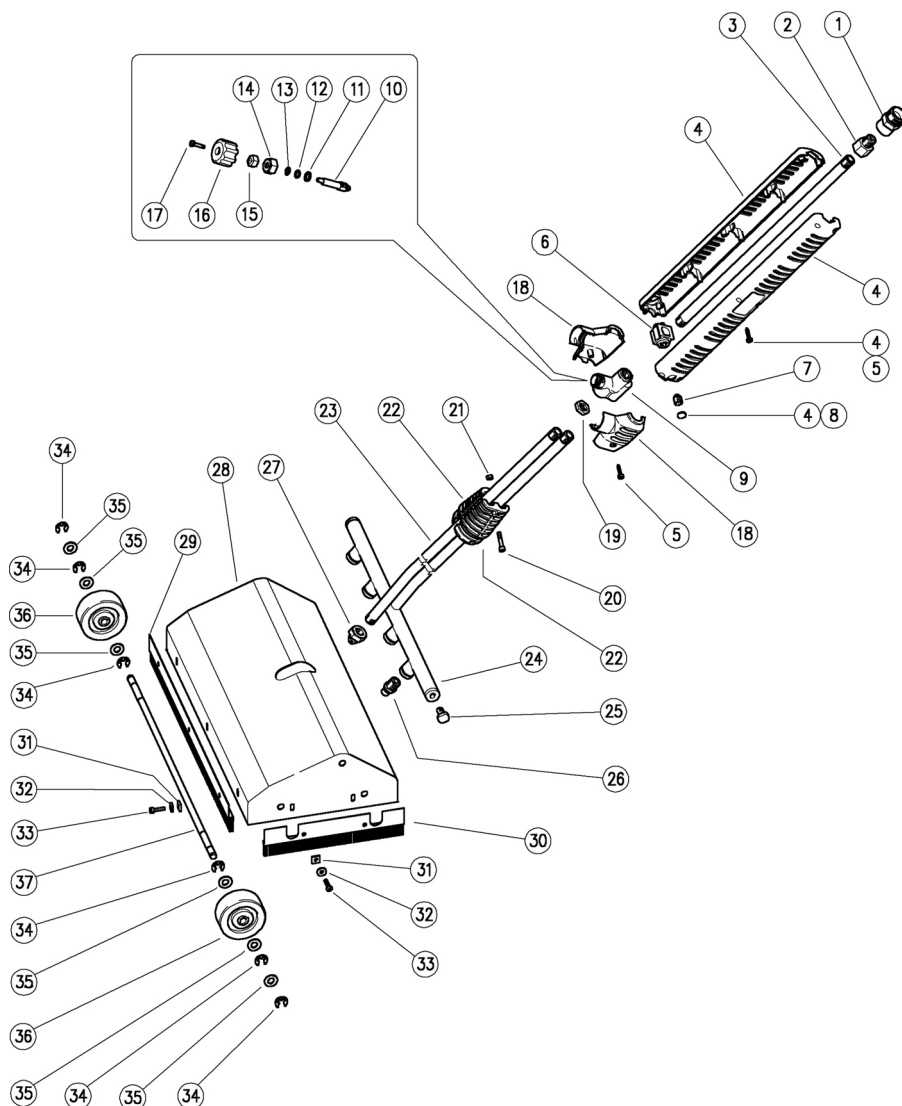
CARATTERISTICHE TECNICHE SPECIFICATIONS

- PRESSIONE NOMINALE RATED PRESSURE	250 bar – 25 MPa (3650 psi)
- PRESSIONE CONSENTITA PERMISSIBLE PRESSURE	280 bar – 28 MPa (4050 psi)
- PORTATA MASSIMA MAX FLOW RATE	20 l/min (5.3 USG p.m.)
- TEMPERATURA MASSIMA MAX WORKING TEMPERATURE	160° C (320°F)
- LARGHEZZA DI LAVAGGIO CLEANING WIDTH	400 mm
- UGELLI ALTA PRESSIONE NOZZLES HIGH PRESSURE	N° 4 1/4 NPT M 80015 Fattore Portata totale 06
- UGELLI BASSA PRESSIONE NOZZLES LOW PRESSURE	N° 1 G1/4 F 120° Fattore Portata 50

MISURE D'INGOMBRO OVERALL DIMENSIONS



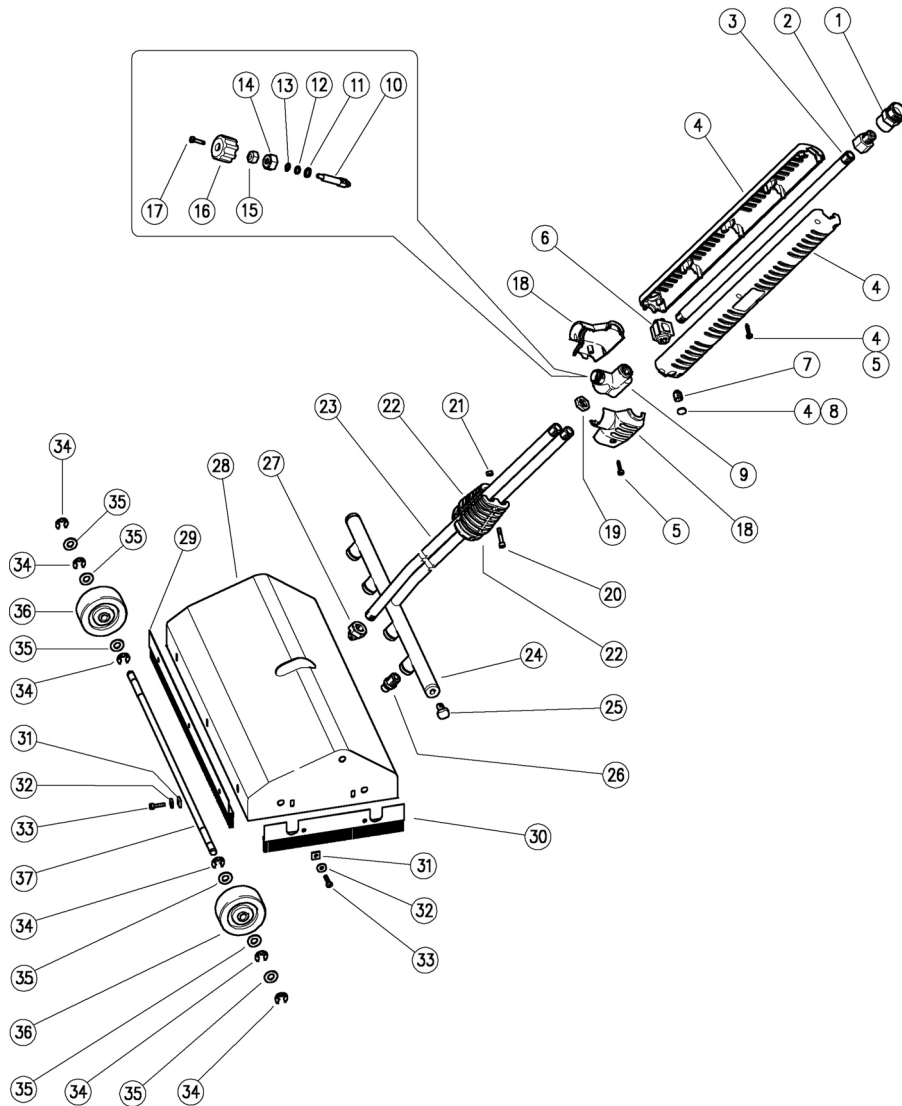
29.0600.00 LP1 lavapavim. inox, A M22, 410mm



Pos.	Codice	Descrizione	Q.tà	K1	K2	K3	K4	Pos.	Codice	Descrizione	Q.tà	K1	K2	K3	K4
1	26.1032.31	AR5 A M22 nipplo a ghiera-G1/4F	1					25	16.1855.00	Vite DIN912 M4x20 mm zinc.	2				10
2	40.5008.31	Riduz.ott. Gc1/4M-G1/4F	1					10	21	11.4513.05	Dado es. M4	2			10
3	40.0314.56	Tubo G1/4MM 377mm inox	1					10	22	41.0416.84	Semiscocca 1/4" PA nera	2			10
4	40.0308.24	Kit scocca S3 nera+viti+tappo lancia	1					1	23	29.0629.56	Tubo bassa pressione inox	1			1
5	16.3077.00	Vite autofil. DIN7981 3,5x18 mm	7	•				10	24	29.0615.21	Ramo alta pressione LP1 inox	1			1
6	40.0304.84	Collare fissag.tubo plast.	1					25	25	29.0616.51	Vite M8 inox	2			5
7	16.2230.00	Grano DIN916 M10x8 mm zinc.	1					10	26	16.1380.15	Ugello a.press. 1/4 +filtro	4			4
8	40.0303.84	Tappo Lancia PA nero	1					10	27	29.0633.51	Ugello bassa pressione inox	1			5
9	41.0401.35	Corpo regol. LD G1/4 FFF ott.	1	•				5	28	29.0605.21	Scocca LP1 inox	1			1
10	41.0951.51	Otturatore LD inox	1	•				5	29	29.0601.23	Spazz. 390 mm inox+PA bianco	2			5
11	14.3643.00	Rosetta 8,2x12x1,5 mm Cu	1	•				10	30	29.0602.23	Spazz. 184 mm inox+PA bianco	2			5
12	10.3170.00	An.OR 2,62x7,6 mm	1	•				10	31	11.4512.00	Dado quadro M4	10			10
13	10.4020.00	An. anties. 8x12,6x1,2 mm	1	•				10	32	14.3514.00	Rosetta 4,3x12x1 mm inox	10			10
14	41.0408.31	Ghiera M18x1,5 ott.	1	•				5	33	16.1840.10	Vite DIN7985 M4x14 mm inox	10			10
15	29.0924.31	Dado scanalato ott.	1	•				10	34	10.0996.07	An. elast. A 7 inox	12			25
16	29.0931.84	Manopola PA nera	1	•				10	35	14.3650.00	Rosetta 8,4x17x1,6 mm inox	12			10
17	16.1840.00	Vite DIN7985 M4x14 mm zinc.	1	•				10	36	14.5060.06	Ruota d.60 mm gomma	4			4
18	41.0424.24	Kit scocca LD9-1/4" +viti	1	•				1	37	29.0607.51	Perno ruote 8x411 mm inox	2			2
19	29.0608.31	Controdado G1/4F ott.	1					10							

Kit	Codice	Descrizione	Q.tà
K1	41.0956.24	Kit regolat. LD9-LP completo	1

29.0600.00 LP1 floor cleaner, sst, A M22, 410mm



Pos.	P/N	Description	Q.ty	K1	K2	K3	K4		Pos.	P/N	Description	Q.ty	K1	K2	K3	K4	
1	26.1032.31	AR5 A M22 screw-type nipple-1/4F Bsp	1					25	20	16.1855.00	Screw, DIN912 M4x20 mm z.pl.	2					10
2	40.5008.31	Reduct,brass 1/4M Bspt-1/4F Bsp	1					10	21	11.4513.05	Hex. nut M4	2					10
3	40.0314.56	Tube, 1/4Bsp MM 377mm Sst.	1					10	22	41.0416.84	Semi-shell, 1/4" PA black	2					10
4	40.0308.24	Casing-kit -S3, black+screws+Lance Plug	1					1	23	29.0629.56	Low pressure tube, Sst.	1					1
5	16.3077.00	S/tapping screw, DIN7981 3,5x18 mm	7	•				10	24	29.0615.21	High pressure branch -LP1, Sst.	1					1
6	40.0304.84	Tube fastener, plast.	1					25	25	29.0616.51	Screw M 8mm, Sst.	2					5
7	16.2230.00	Set screw, DIN916 M10x8 mm z.pl.	1					10	26	16.1380.15	Nozzle, 1/4 HP +strainer	4					4
8	40.0303.84	Lance Plug, PA black	1					10	27	29.0633.51	Low pressure nozzle, Sst.	1					5
9	41.0401.35	Valve housing -LD, 1/4FFF Bsp brass	1	•				5	28	29.0605.21	Casing -LP1, Sst.	1					1
10	41.0951.51	Shutter, LD Sst.	1	•				5	29	29.0601.23	Brush, 390 mm Sst.+PA white	2					5
11	14.3643.00	Washer, 8,2x12x1,5 mm Cu	1	•				10	30	29.0602.23	Brush, 184 mm Sst.+PA white	2					5
12	10.3170.00	O-ring, 2,62x7,6 mm	1	•				10	31	11.4512.00	Square nut M4	10					10
13	10.4020.00	Back-up ring, 8x12,6x1,2 mm	1	•				10	32	14.3514.00	Washer, 4,3x12x1 mm Sst.	10					10
14	41.0408.31	Ring nut, M18x1,5 brass	1	•				5	33	16.1840.10	Screw, DIN7985 M4x14 mm Sst.	10					10
15	29.0924.31	Groove nut, brass	1	•				10	34	10.0996.07	Snap ring, A 7 Sst.	12					25
16	29.0931.84	Knob, PA black	1	•				10	35	14.3650.00	Washer, 8,4x17x1,6 mm Sst.	12					10
17	16.1840.00	Screw, DIN7985 M4x14 mm z.pl.	1	•				10	36	14.5060.06	Rubber wheel, d.60 mm	4					4
18	41.0424.24	Casing-kit -LD9-1/4" +screws	1	•				1	37	29.0607.51	Wheel shaft, 8x411 mm Sst.	2					2
19	29.0608.31	Locknut, 1/4F Bsp brass	1					10									
Kit	P/N	Description															
K1	41.0956.24	Valve-Kit -LD9-LP, complete	1					1									

P.A. SpA EQUIPAGGIAMENTI TECNICI DEL LAVAGGIO

Via Milano, 13 42048 Rubiera - (RE) ITALY
Tel +39 0522 623611 (ric aut) - Fax +39 0522 629600
Info@pa-etl.it - www.pa-etl.it

COMPANY WITH QUALITY MANAGEMENT
SYSTEM CERTIFIED BY DNV
= ISO 9001:2008 =