



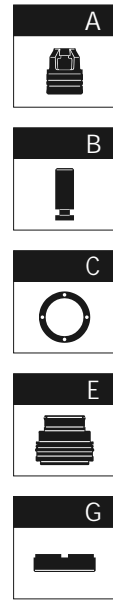
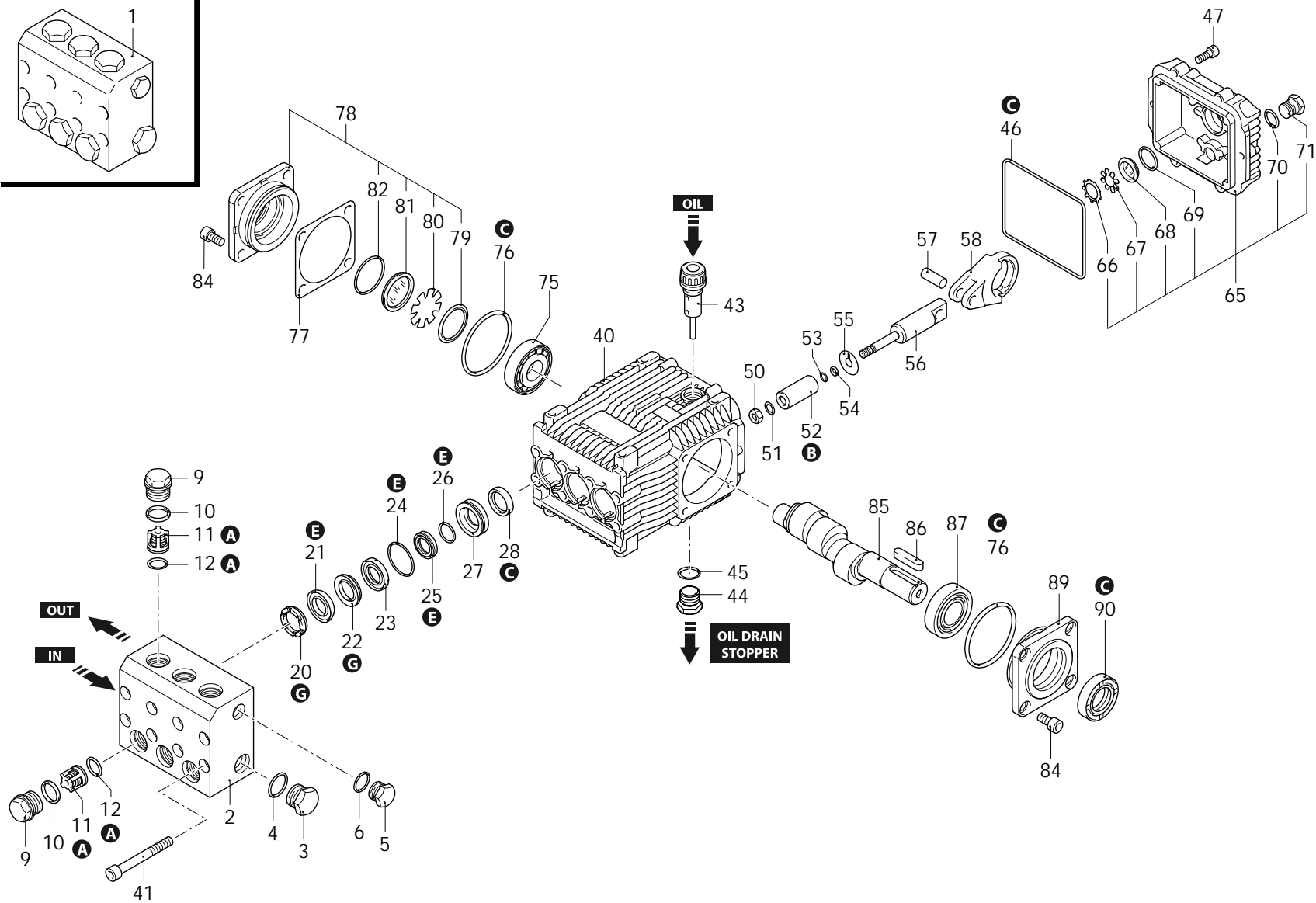
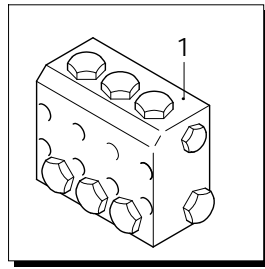
Series Stainless Steel

JK-SS

N

1450rpm

ø 24mm



AR-1\_000003\_v01

31/05/2024



Series Stainless Steel

JK-SS

N

1450rpm

Ø 24mm

P	Code	Description	Q	Assembly prescription	Validity	P	Code	Description	Q	Assembly prescription	Validity
1	2289315	Head assembly	Ø 22	1		68	1260250	Level gauge	1		
2	2340340	Head	stainless steel	1	C=20Nm	69	1140450	O-ring	Ø 20,24x2,62	1	Lubricate with grease Molykote PG54
3	2340360	Plug	1/2" G	1	C=30Nm	70	740290	O-ring	Ø 14x1,78	1	Lubricate with grease Molykote PG54
4	180101	O-ring	Ø 17,5x2	1	Lubricate with grease Molykote PG54	71	2282280	Plug	with magnet	1	C=20Nm
5	2340350	Plug	3/8" G	1	C=20Nm	75	2280340	Bearing		1	
6	740290	O-ring	Ø 14x1,78	1	Lubricate with grease Molykote PG54	76	640030	O-ring	Ø 59,99x2,62	2	
9	2340030	Plug		6	C=54Nm / Loxeal 55-14	77	1380120	Shim 0.10mm		1	
10	960160	O-ring	Ø 17,86x2,62	6	Lubricate with grease Molykote PG54	77	1380130	Shim 0.19mm		1	
11	2349050	Complete valve		6		77	1380530	Shim 0.25mm		1	
12	880830	O-ring	Ø 15,54x2,62	6	Lubricate with grease Molykote PG54	78	2289020	Cover	complete	1	
20	840320	Ring	support Ø 22	3		79	1941290	Ring		1	
21	2283400	Water seal		3		80	1941260	Plate		1	
22	2340330	Ring	anti-extrusion	3		81	1941270	Level gauge		1	
23	2283600	Piston guide	front Ø 22	3		82	100410	O-ring	Ø 34,6x2,62	1	
24	961240	O-ring	Ø 31,47x1,78	3		84	850370	Screw	TCEI M8x16	4	C=24,5Nm
25	2283320	Gasket		3		85	2282350	Shaft	13 marked	1	
26	2282230	Ring	anti-extrusion	3		86	3200230	Key		1	
27	2283341	Piston guide	rear Ø 22	3		87	1383140	Bearing		1	
28	880520	Ring	seal	3		89	2340280	Support	open bearing	1	
40	2283610	Pump body		1		90	2282261	Ring	seal	1	Assemble with tool [2281010]
41	1383440	Screw	TCEI M8x70	8	C=20Nm	A	2275	Valve kit		1	
43	880130	Oil plug	with oil dipstick	1		B	46110	Piston kit	Ø 22	1	
44	1980740	Plug	3/8" G brass	1	C=20Nm	C	43403	Oil seal kit		1	
45	740290	O-ring	Ø 14x1,78	3	Lubricate with grease Molykote PG54	E	46113	Water seal kit	Ø 22	1	
46	1780510	O-ring	Ø 106x3	1		G	46115	Support ring kit	Ø 22	1	
47	780060	Screw	TCEI M6x25	6	C=10,4Nm						
50	2340060	Nut	M8	3	C=10Nm / Loxeal 55-14						
51	2340190	Plate		3							
52	1383340	Piston	Ø 22	3	Lubricate with grease Molykote PG54						
53	480480	O-ring	Ø 4,48x1,78	3							
54	1080550	Ring	anti-extrusion	3							
55	2340200	Washer		3							
56	2282101	Piston	guide	3							
57	1380060	Pin		3							
58	1383020	Connecting-rod	bronze	3							
65	2289021	Cover	complete	1							
66	1260430	Ring		1							
67	1780690	Plate		1							

Revision: 1

Oil type: SAE 15W40

Validity: &lt; XX/YY = From week/year

Date: 31/05/2024

Oil quantity: 0,515 Kg

C= Tightening torque (Tolerance +0 ÷ -10%)

\* = Not present for electric pump

28327 - JK-SS 21.15 N