



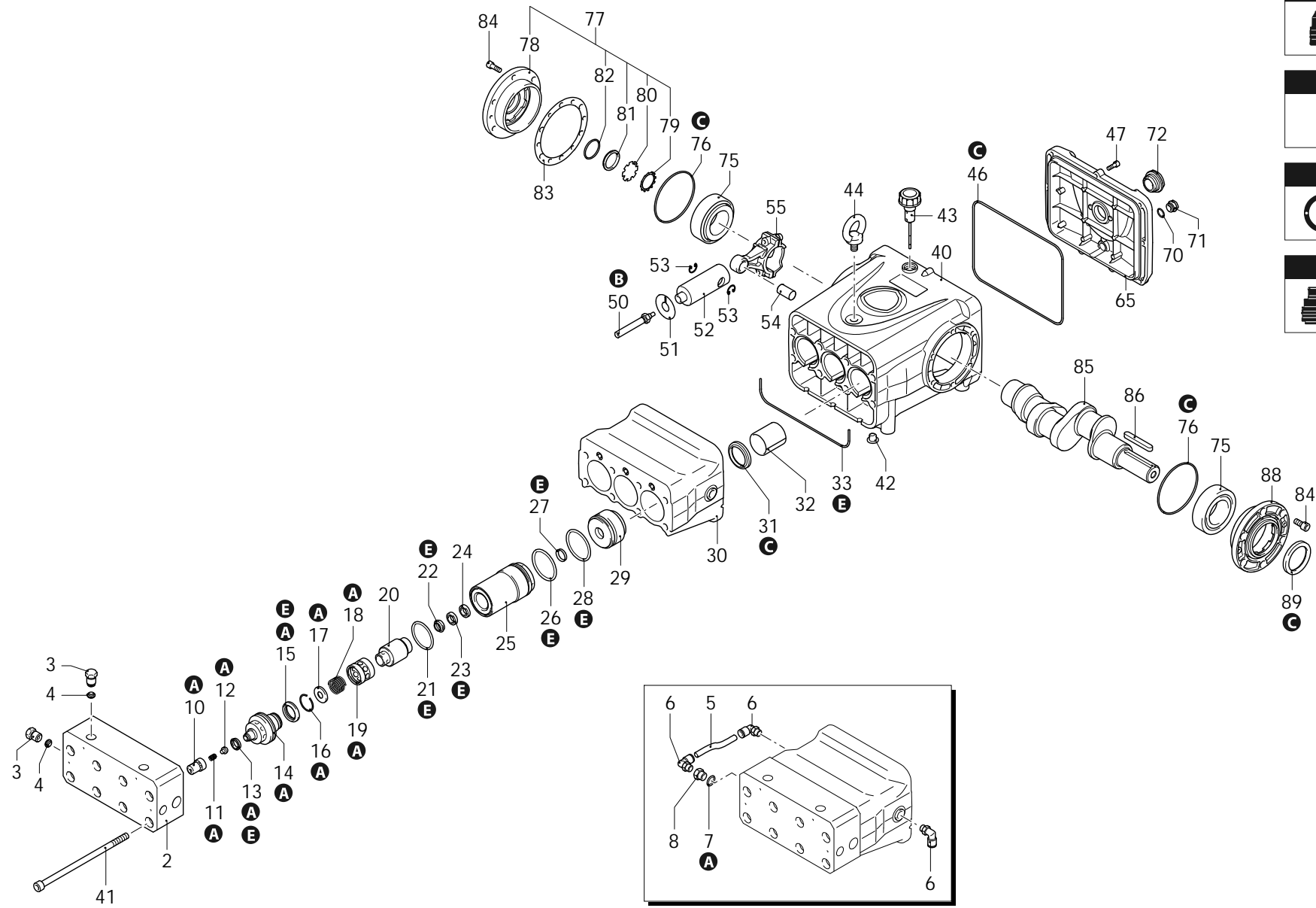
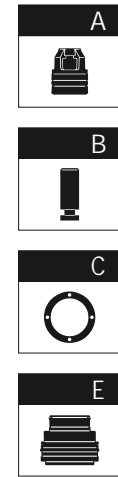
Series 418

CR

N

1000rpm

ø 35mm



AR\_s418-05\_v01

31/05/2024



Series 418

CR

N

1000rpm

ø 35mm

P	Code	Description	Q	Assembly prescription	Validity	P	Code	Description	Q	Assembly prescription	Validity
2	4182040	Head	1			50	4181300	Piston	3	Ø 14	
3	4181390	Plug	3	C=80Nm		51	4181310	Plate	3		
4	4181400	Plate	3			52	4181321	Piston guide	3		
5	4182000	Tube	1			53	160691	Ring	6	seeger Øi 18	
6	4181920	Fitting	3			54	4180090	Pin	3		
7	180101	O-ring	1	Lubricate with grease Molykote PG54		55	4180820	Connecting-rod	3	bronze	
8	2340520	Plug	1	C=40Nm		65	4180030	Cover	1	C=24,5Nm / Loxeal 55-14	
10	4181380	Valve cage	3			70	740290	O-ring	1	Ø 14x1,78	Lubricate with grease Molykote PG54
11	4181470	Spring	3			71	2282280	Plug	1	with magnet	C=20Nm
12	4181360	Valve	3			72	4180790	Level gauge	1		C=24Nm
13	4181910	Gasket	3			75	4180570	Bearing	2		
14	4181370	Valve body	3			76	2640220	O-ring	2	Ø 94,92x2,62	
15	4181900	Gasket	3			77	4189000	Cover	1	complete	
16	4181460	Ring	3			78	4180050	Cover	1		
17	4181420	Wobble plate	3			79	1941290	Ring	1		
18	4181480	Spring	3			80	1941260	Plate	1		
19	4181430	Valve guide	3			81	1941270	Level gauge	1		
20	4181990	Bushing	3			82	100410	O-ring	1	Ø 34,6x2,62	
21	2820761	O-ring	3			83	4180260	Shim 0.05mm	1		
22	4181640	Gasket	3			83	4180270	Shim 0.10mm	1		
23	4181680	Ring	3			83	4180280	Shim 0.19mm	1		
24	4181690	Ring	3			83	4180290	Shim 0.25mm	1		
25	4181350	Bushing	3			84	180030	Screw	12	TCEI M8x20	C=24,5Nm
26	750740	O-ring	3			85	4180060	Shaft	1	3 marked	
27	3800350	Gasket	3			86	2820280	Key	1		
28	750740	O-ring	3			88	4180040	Cover	1		
29	4181340	Bushing	3			89	4180300	Ring	1	seal	Lubricate with grease Molykote PG54
30	4181440	Body	1			A	46907	Valve kit	1		
31	480671	Ring	3	Assemble with tool [1781000]		B	46906	Piston kit	1	Ø 14	
32	4180500	Bushing	3			C	43616	Oil seal kit	1		
33	4181500	Gasket	1			E	46908	Water seal kit	1	Ø 14	
40	4181520	Pump body	1								
41	4181510	Screw	8	C=120Nm							
42	4181210	Plug	3								
43	3660350	Oil plug	1								
44	2820330	Eyebolt	1	C=15Nm							
46	4180340	Gasket	1								
47	780330	Screw	9	C=10Nm / Loxeal 55-14							

Revision: 1

Oil type: SAE 15W40

Validity: &lt; XX/YY = From week/year

Date: 31/05/2024

Oil quantity: 3,100 Kg

C= Tightening torque (Tolerance +0 ÷ -10%)

\* = Not present for electric pump