



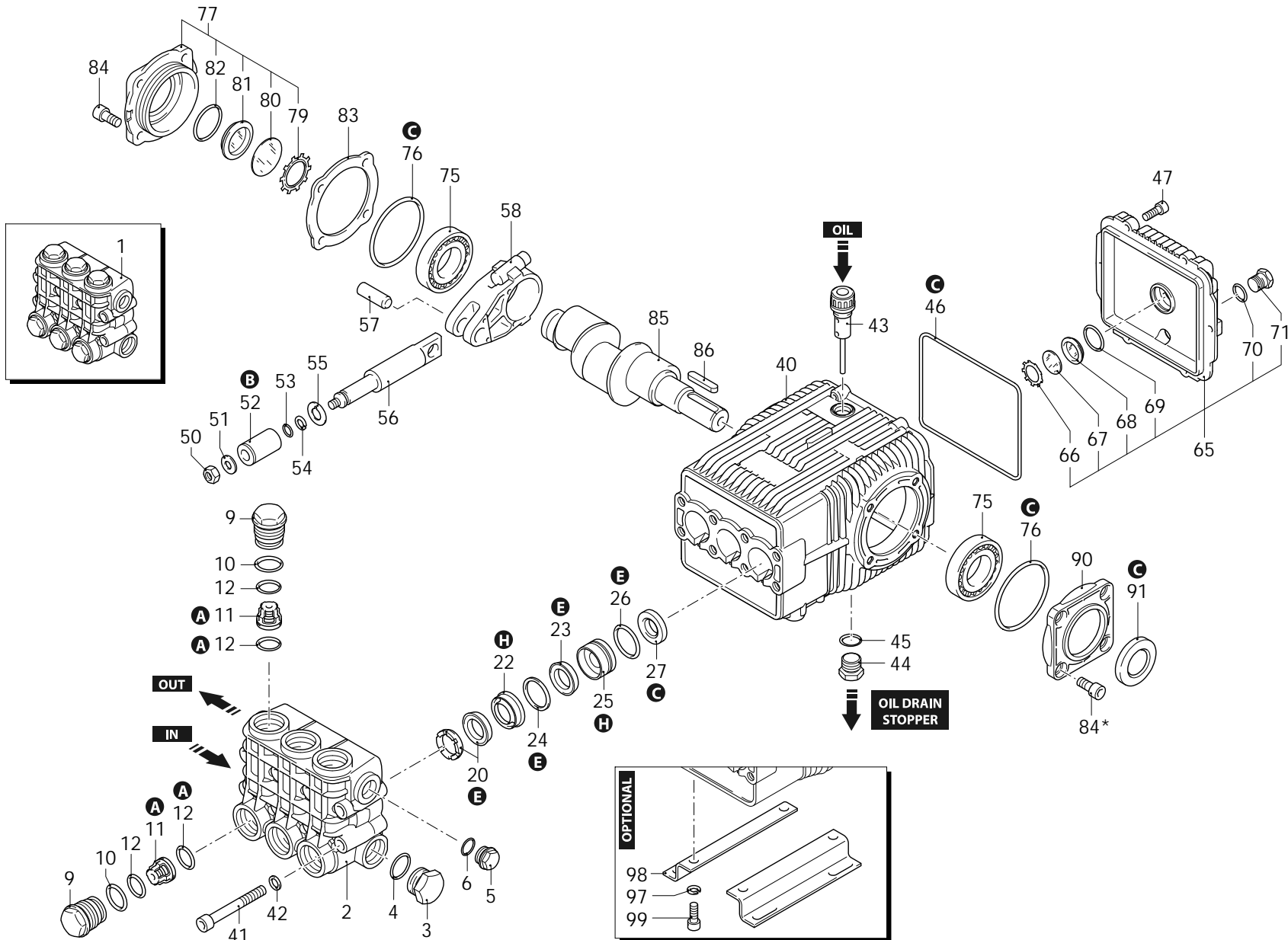
Series 194

XW

N

1450rpm

ø 24mm



AR_s194-03_020

31/05/2024



Series 194

XW

N

1450rpm

ø 24mm

P	Code	Description	Q	Assembly prescription	Validity	P	Code	Description	Q	Assembly prescription	Validity
1	1949200	Head assembly	Ø 20	1		69	1140450	O-ring	Ø 20,24x2,62	1	Lubricate with grease Molykote PG54
2	1940021	Head		1		70	740290	O-ring	Ø 14x1,78	1	Lubricate with grease Molykote PG54
3	1140300	Plug	3/4" G	1	C=35Nm	71	1980740	Plug	3/8" G brass	1	C=20Nm
4	550350	O-ring	Ø 23,81x2,62	1		75	1941370	Bearing		2	
5	1980740	Plug	3/8" G brass	1	C=20Nm	76	1941380	O-ring	Ø 66,34x2,62	2	
6	740290	O-ring	Ø 14x1,78	1	Lubricate with grease Molykote PG54	77	1949011	Cover	complete	1	
9	1940140	Plug		6	C=7Nm / Loxeal 55-14	79	1941290	Ring		1	
10	1940150	Ring	anti-extrusion	6		80	1941260	Plate		1	
11	1949050	Complete valve		6		81	1941270	Level gauge		1	
12	1140450	O-ring	Ø 20,24x2,62	12	Lubricate with grease Molykote PG54	82	100410	O-ring	Ø 34,6x2,62	1	
20	1940440	Gasket	Ø 20	3		83	1941390	Shim 0.05mm		1	
22	1940430	Piston guide	front Ø 20	3		83	1941400	Shim 0.10mm		1	
23	1940470	Gasket	Ø 20	3		83	1941410	Shim 0.19mm		1	
24	1941220	O-ring	cut Ø 22	3		83	1941420	Shim 0.25mm		1	
25	1940450	Piston guide	rear Ø 20	3		84	850370	Screw	TCEI M8x16	4	C=24,5Nm
26	820490	O-ring	Ø 34,65x1,78	3		84*	850370	Screw	TCEI M8x16	4	C=24,5Nm
27	1943730	Ring	seal	3		85	1940520	Shaft	5 marked	1	
40	1941330	Valve body		1		86	650250	Key		1	
41	1940260	Screw	TCEI M10x80	8	C=50Nm	90	1941240	Support		1	
42	650530	Washer		8		91	820681	Ring	seal	1	C=10Nm / Loxeal 55-14
43	1140370	Oil plug	with oil dipstick	1		97	200231	Washer		4	
44	1980740	Plug	3/8" G brass	1	C=20Nm	98	1940370	Foot		2	
45	740290	O-ring	Ø 14x1,78	1	Lubricate with grease Molykote PG54	99	1940380	Screw	TCEI 10x18	4	C=50Nm
46	1940410	O-ring	Ø 132x3	1		A	2780	Valve kit		1	
47	1200430	Screw	TCEI M6x16	6	C=10Nm / Loxeal 55-14	B	2650	Piston kit	Ø 20	1	
50	1940570	Nut	M8	3	C=20Nm / Loxeal 55-14	C	2873	Oil seal kit		1	
51	1940580	Washer		3		E	2782	Water seal kit	Ø 20	1	
52	1420430	Piston	Ø 20	3		E	2778	Water seal kit	Ø 20 Viton	1	
53	880840	O-ring	Ø 9,25x1,78	3	Lubricate with grease Molykote G807	H	2784	Piston guide kit	Ø 20	1	
54	1940120	Ring	anti-extrusion	3							
55	960460	Plate		3							
56	1940070	Piston	guide	3							
57	1940060	Pin		3							
58	1940051	Connecting-rod	aluminium	3	Lubricate with grease Molykote BR2 PLUS / C=20Nm						
65	1949010	Cover	complete	1							
66	1260430	Ring		1							
67	1780690	Plate		1							
68	1260250	Level gauge		1							

Revision: 1

Oil type: SAE 15W40

Validity: < XX/YY = From week/year

Date: 31/05/2024

Oil quantity: 0,870 Kg

C= Tightening torque (Tolerance +0 ÷ -10%)

* = Not present for electric pump